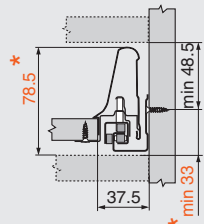
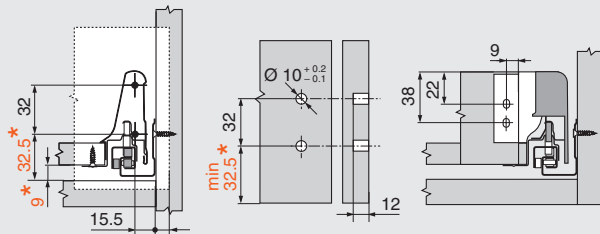


# TANDEMBOX 358N

Platzbedarf / space requirement / encombrement



Einbaumaße / installation dimensions / dimensions de montage

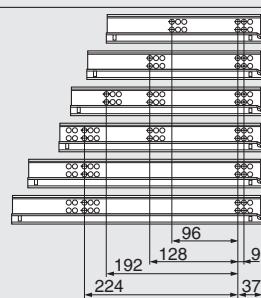


\* zusätzlich 2 mm in Kombination mit BLUMOTION Z70.XXX  
 plus 2 mm in combination with BLUMOTION Z70.XXX  
 2 mm supplémentaires en combinaison avec BLUMOTION Z70.XXX

Befestigungspositionen / fixing positions / positions de fixation

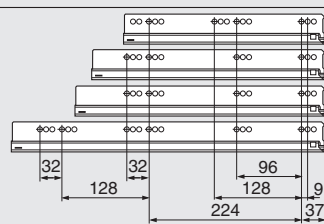
358N / 358M

- 270 mm
- 350 mm
- 400 mm
- 450 mm
- 500 mm
- 550 mm



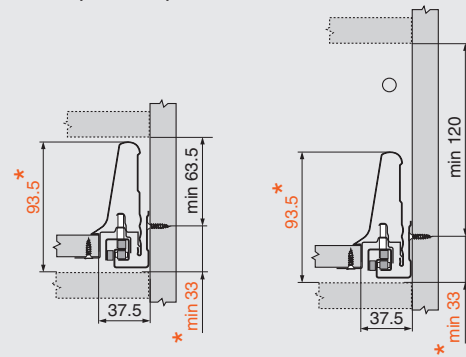
359M / 359K

- 450 mm
- 500 mm
- 550 mm
- 650 mm

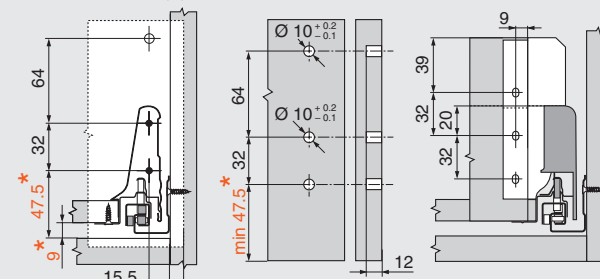
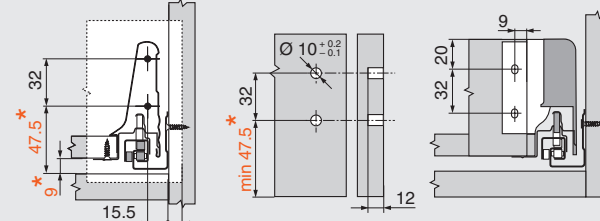


# TANDEMBOX 358M

Platzbedarf / space requirement / encombrement

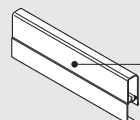


Einbaumaße / installation dimensions / dimensions de montage



\* zusätzlich 2 mm in Kombination mit BLUMOTION Z70.XXX  
 plus 2 mm in combination with BLUMOTION Z70.XXX  
 2 mm supplémentaires en combinaison avec BLUMOTION Z70.XXX

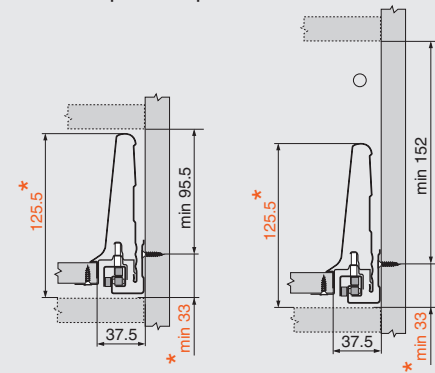
Berechnung Vorderstück Innenschubkasten  
 calculation front piece inner drawer  
 calculatoin face avant pour tiroir à l'anglaise



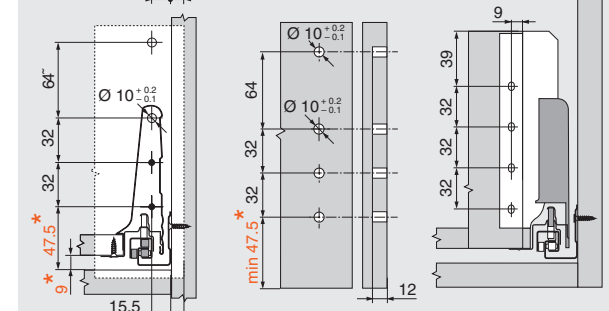
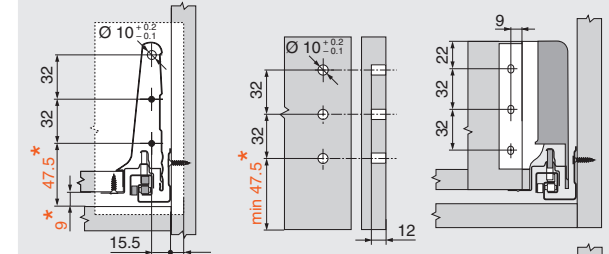
Breite = lichte Korpusweite - 87 mm  
 width = internal cabinet width - 87 mm  
 largeur = larg. inter. du corps de meuble - 87 mm  
 Höhe / height / hauteur = 58.9 mm

# TANDEMBOX 358K

Platzbedarf / space requirement / encombrement



Einbaumaße / installation dimensions / dimensions de montage



\* zusätzlich 2 mm in Kombination mit BLUMOTION Z70.XXX  
 plus 2 mm in combination with BLUMOTION Z70.XXX  
 2 mm supplémentaires en combinaison avec BLUMOTION Z70.XXX

Julius Blum GmbH  
 Beschlägefabrik  
 A-6973 Höchst, Austria  
 Tel.: 05578/705-0  
 Telefax: 05578/705-44

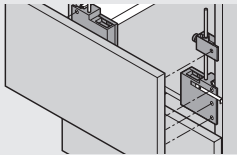
Technische Änderungen vorbehalten  
 Subject to technical changes without notice  
 Modifications techniques réservées



IDNR: 457.214.0 MA-145/05.02 I  
 BAU0005597583 IDX: 00

# Montage, Bedienung, Verstellung / assembly, handling, adjustment / montage, application, réglage

Front / front / façade

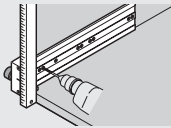


ZML.3500

ZML.3510

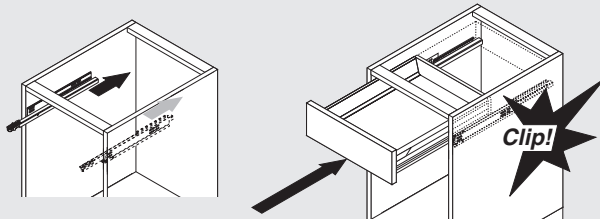
ZML.3800

Korpus / carcass / corps de meuble

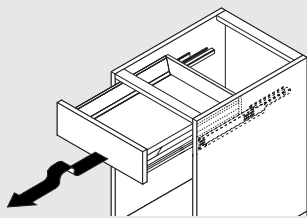


T65.5000

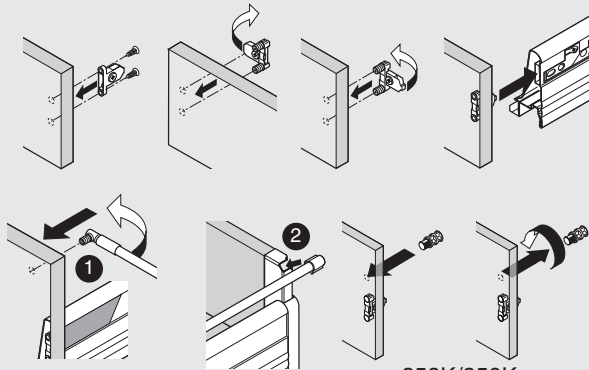
einhängen / insert / accrocher



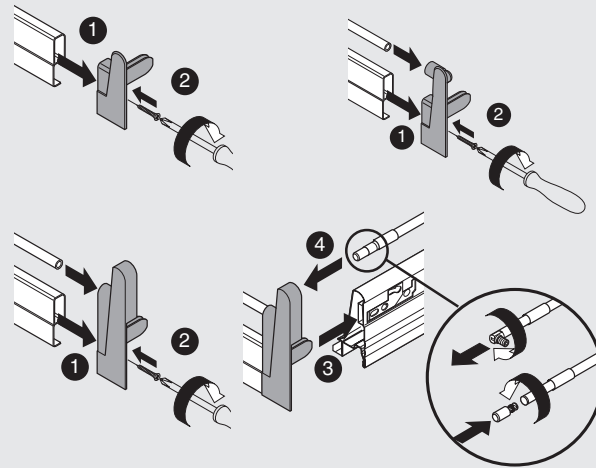
aushängen / remove / décrocher



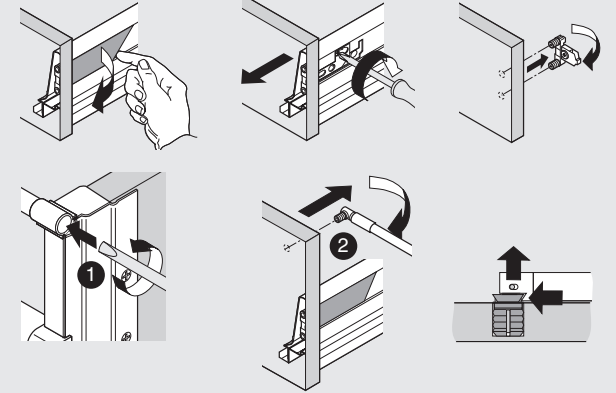
Montage / montage / réglage



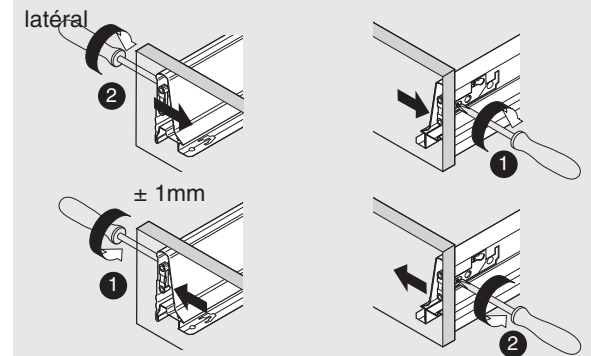
358K/359K



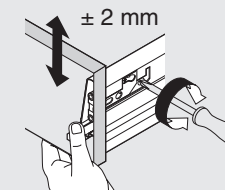
Demontage / dismantling / démontage



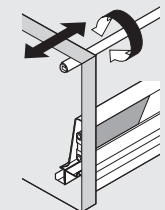
seitlich verstellen / lateral adjustment / réglage latéral



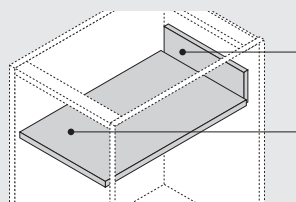
Höhe verstellen / height adjustment / réglage en hauteur



Neigung verstellen / tilt adjustment / réglage de l'inclinaison



Zuschnittmaße für 16 mm Spanplatten / cutting dimensions for 16 mm components / débit pour panneaux en 16 mm



Breite = lichte Korpusweite - 87 mm / width = internal cabinet width - 87 mm / largeur = largeur intérieure du corps de meuble - 87 mm

Höhe / height / hauteur: 358N = 69 mm; 358M = 84 mm; 358M = 135 mm

Breite = lichte Korpusweite - 75 mm / width = internal cabinet width - 75 mm / largeur = largeur intérieure du corps de meuble - 75 mm

Länge = Zargenlänge - 24 mm / length = drawer length - 24 mm / longueur = longueur du tiroir - 24 mm